

onnetwork

TRAINING PRESENTATION

Live-stream

WWW.ONNETWORK.PL

Agenda

What is live-streaming?

Starting a live-stream

Encoder configuration

OBS Studio – step-by-step configuration

Stream monitoring

Ad configuration

Overlay configuration

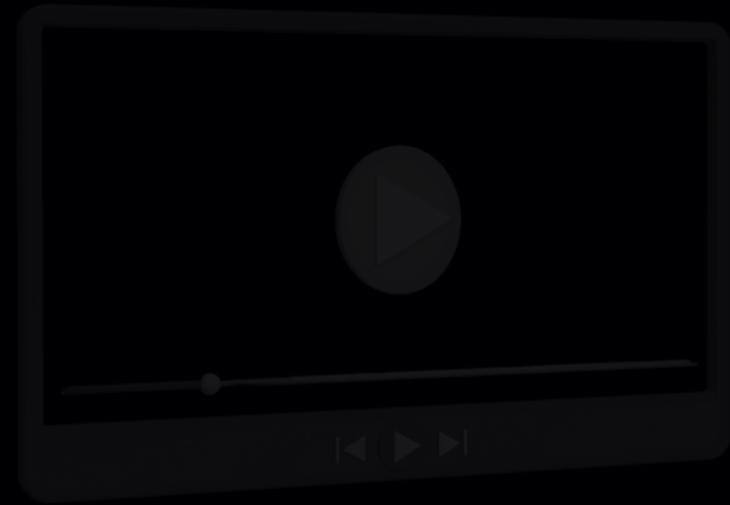
TV ads: SCTE-35 and HLS





What is live streaming?

Live streaming allows users to watch video and audio in real time with minimal delay.

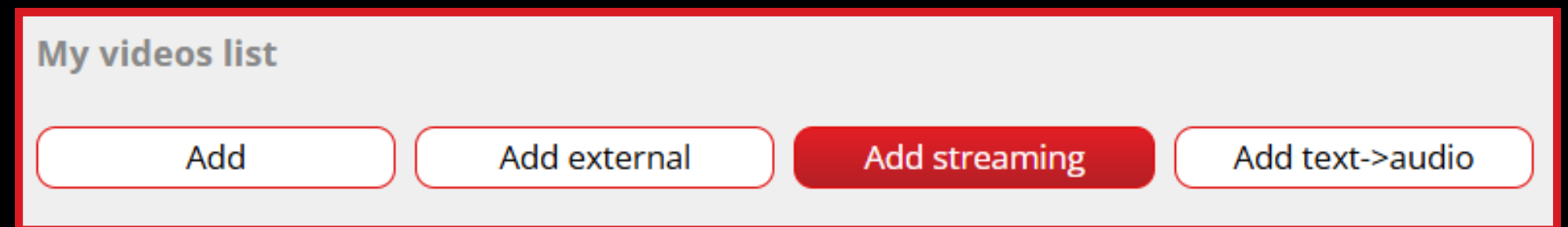
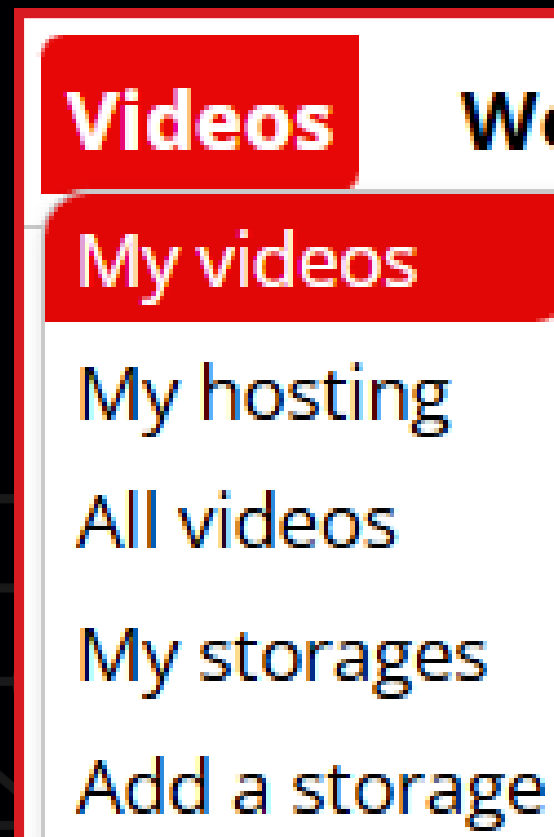


To activate live streaming, contact your Onnetwork representative.



Starting a Live Stream

1. Go to the **My Videos** section.
2. Click **Add Live Stream**.



Encoder Configuration

3. Fill in the three required fields and click Save.

Add Streaming

Save

Cancel

Add to storage

POLAND/Onnetwork Ads Stuff/Storages/testowy magazyn

Title

Testing live-streaming*

Description

Live-streaming

Tags

Enter a tag...

Author

testowy magazyn

Tags

test

Language

Polish

Category

Unset

Ad status

Video approved for all ads

Added

2025-03-18 16:07:09

Transmission status

NOT EVEN TESTED ONCE

URL for Encoder

rtmp://in.str.onnetwork.tv:1935/onnetworklive?auth=4Q.sQFy44d

Key for Encoder

onnet-1877452

Embed code: (?)

testowawa julki

<script type="text/javascript" src="https://video.onnetwork.tv/embed.php?sid=NHdLLDhnVXIisMA=="></script>

Copy

Modify code

4. Obtain the **URL** and **encoder key**.
5. Embed the player on your site by generating an **embed code** for the content.



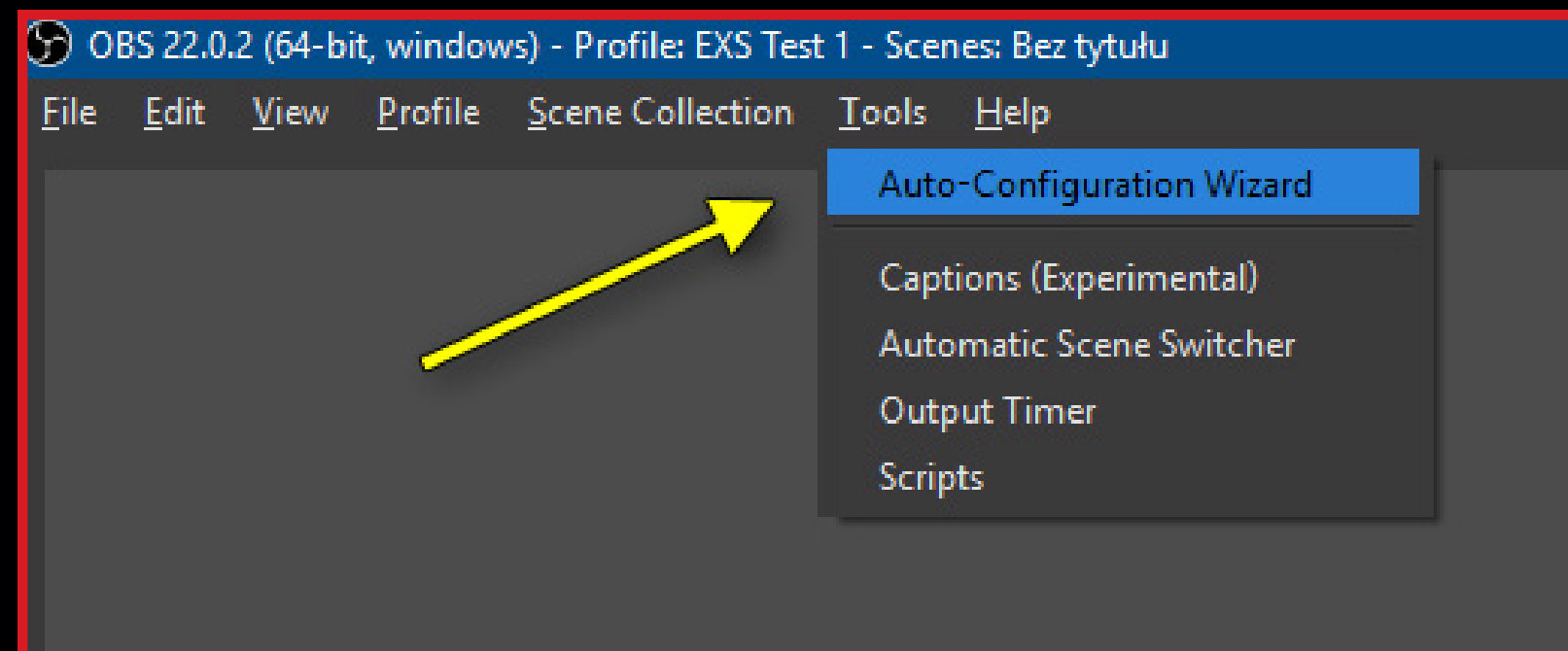
OBS Studio – Step-by-Step Configuration

OBS Studio is a free and popular live streaming software that allows for easy setup and stable broadcasting.

1. Download and install OBS Studio from
www.obsproject.com

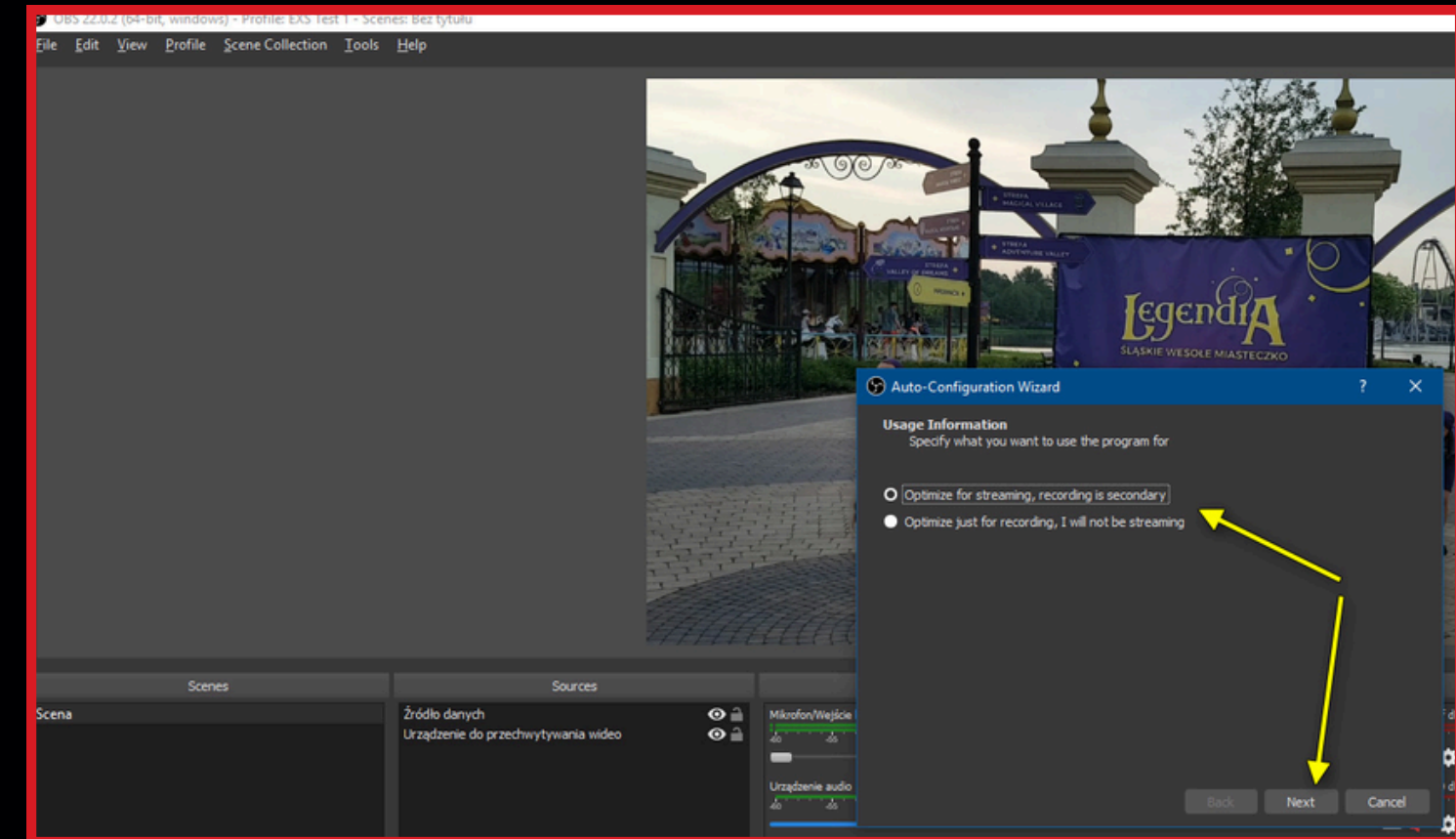
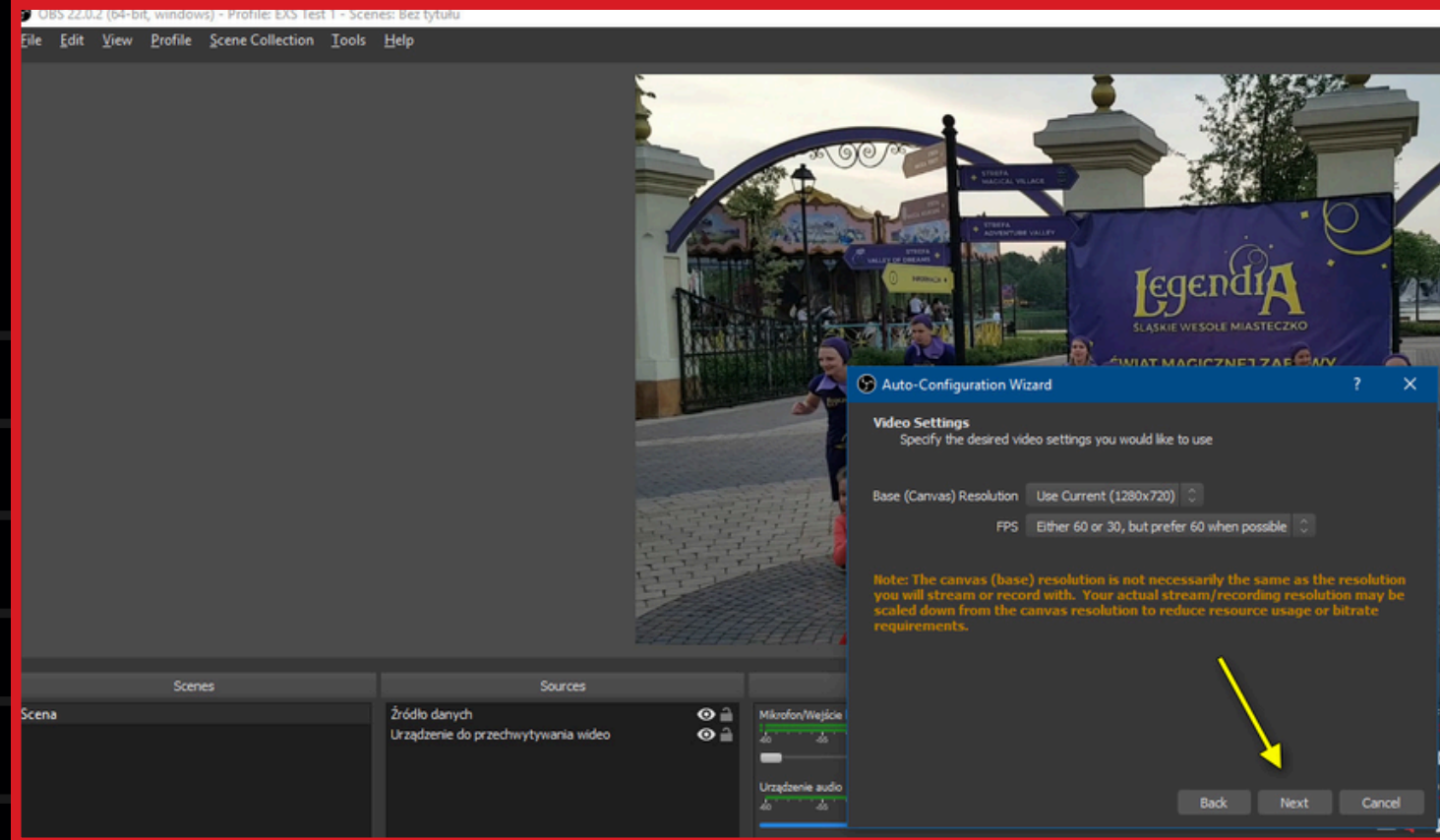
2. Open the program and navigate to:

Tools > Auto-Configuration Wizard



OBS Studio – Step-by-Step Configuration

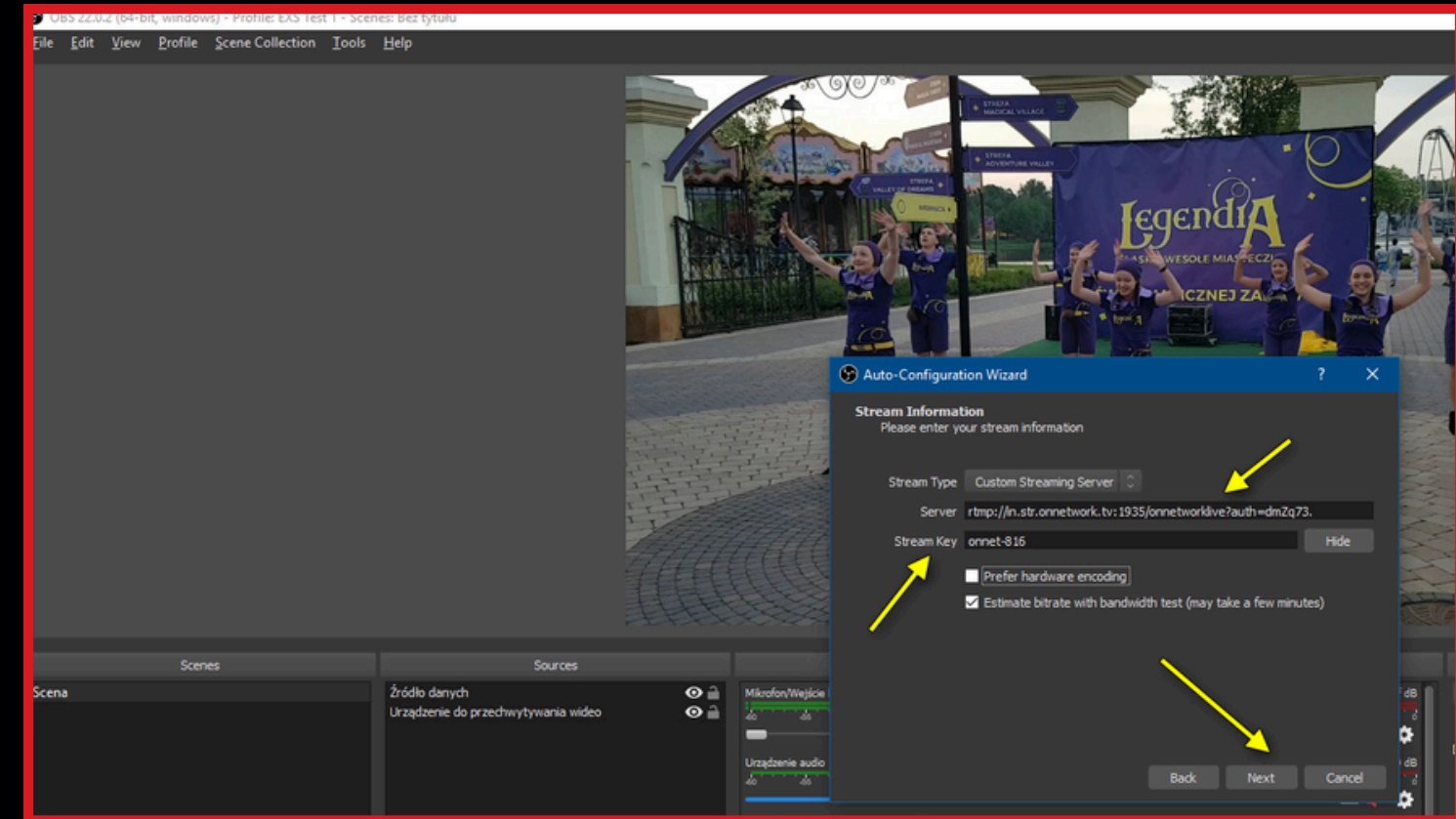
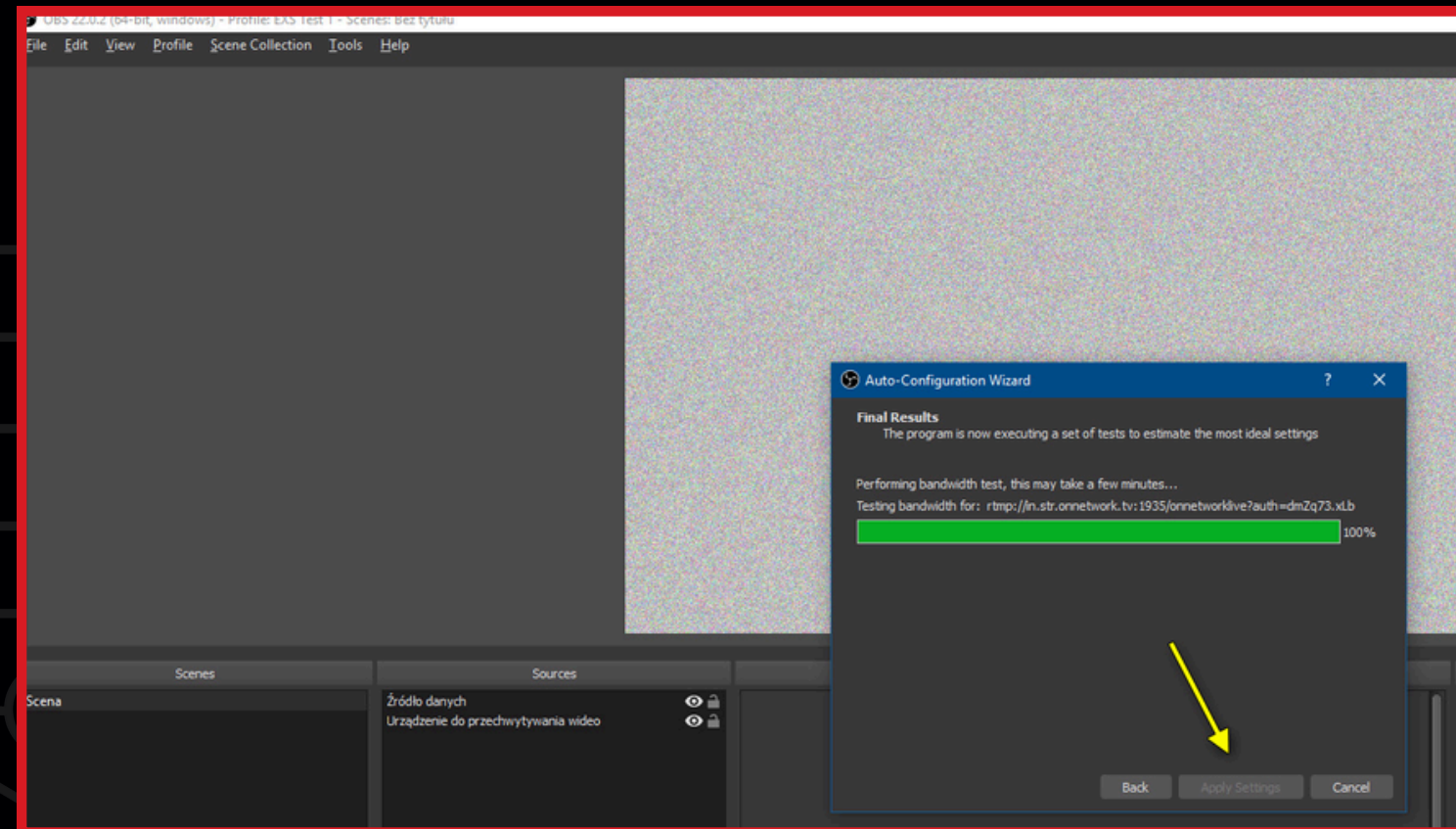
3. Select **Optimize** for live streaming and click **Next**.



4. Let the system choose the optimal resolution or set your own.

OBS Studio – Step-by-Step Configuration

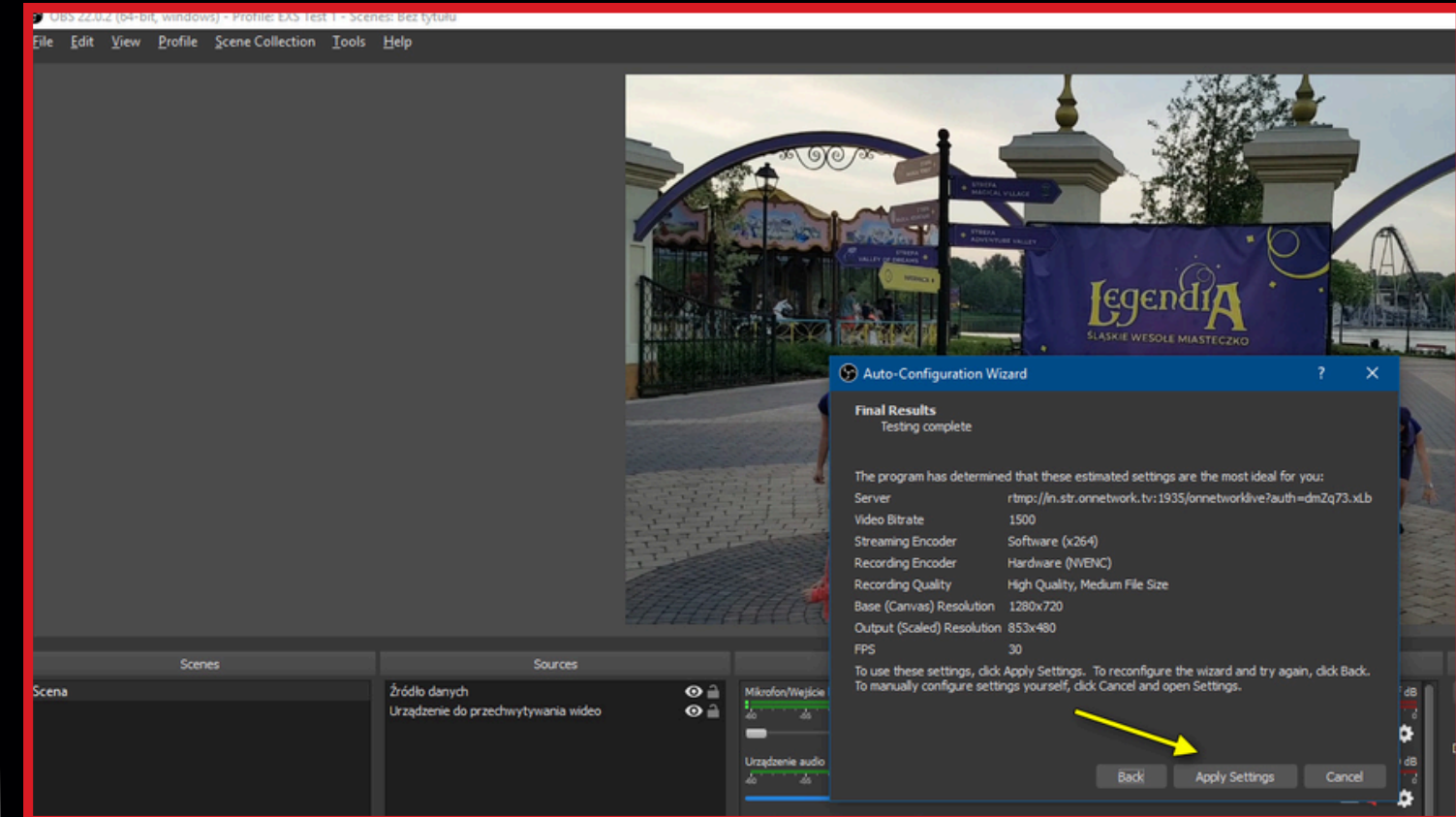
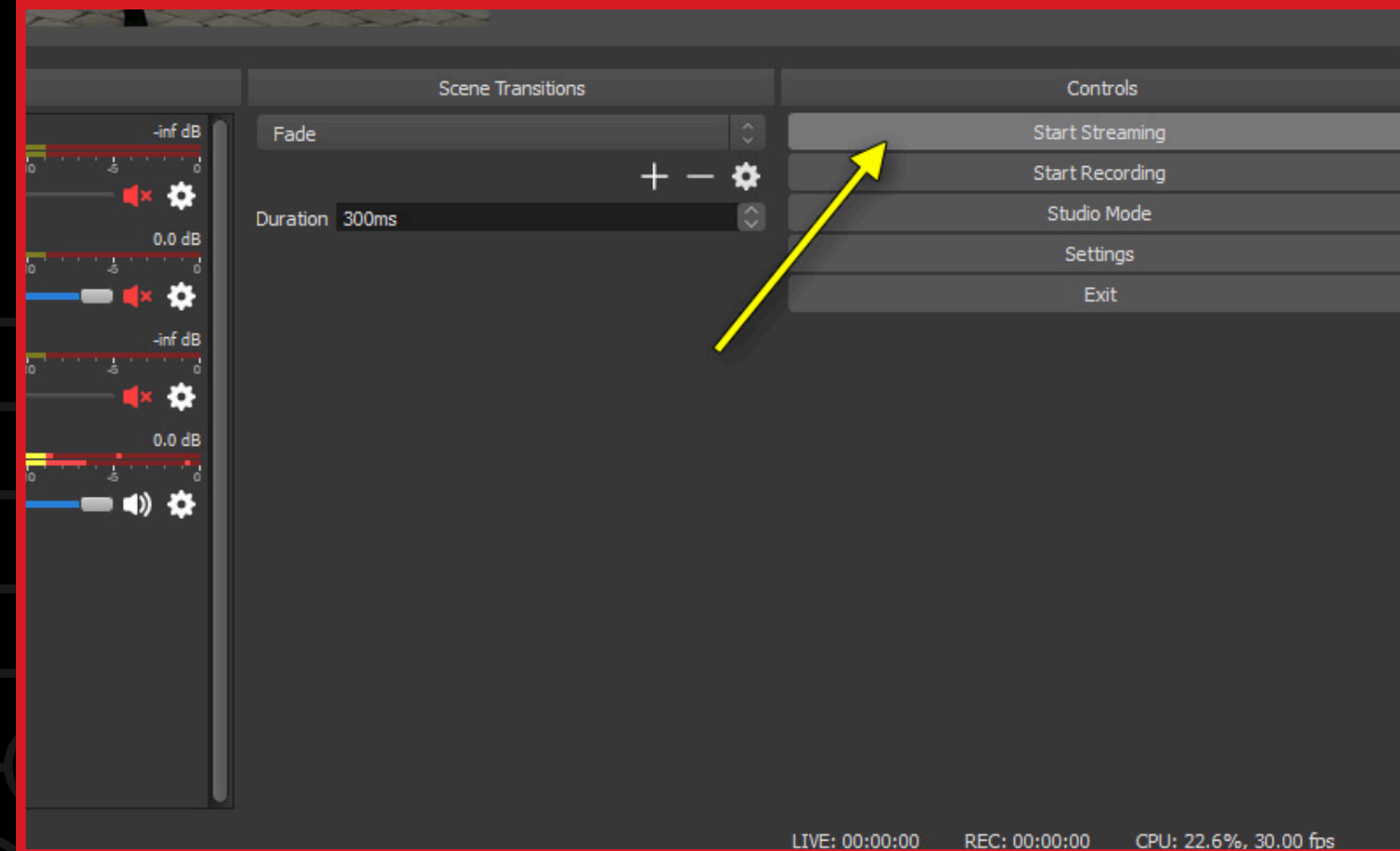
5. Choose **Custom Streaming Server**, then paste the encoder **URL** and **stream key**.



6. Start bandwidth testing and click **Apply** when finished.

OBS Studio – Step-by-Step Configuration

7. OBS Studio will display parameters – review and confirm by clicking **Apply**.

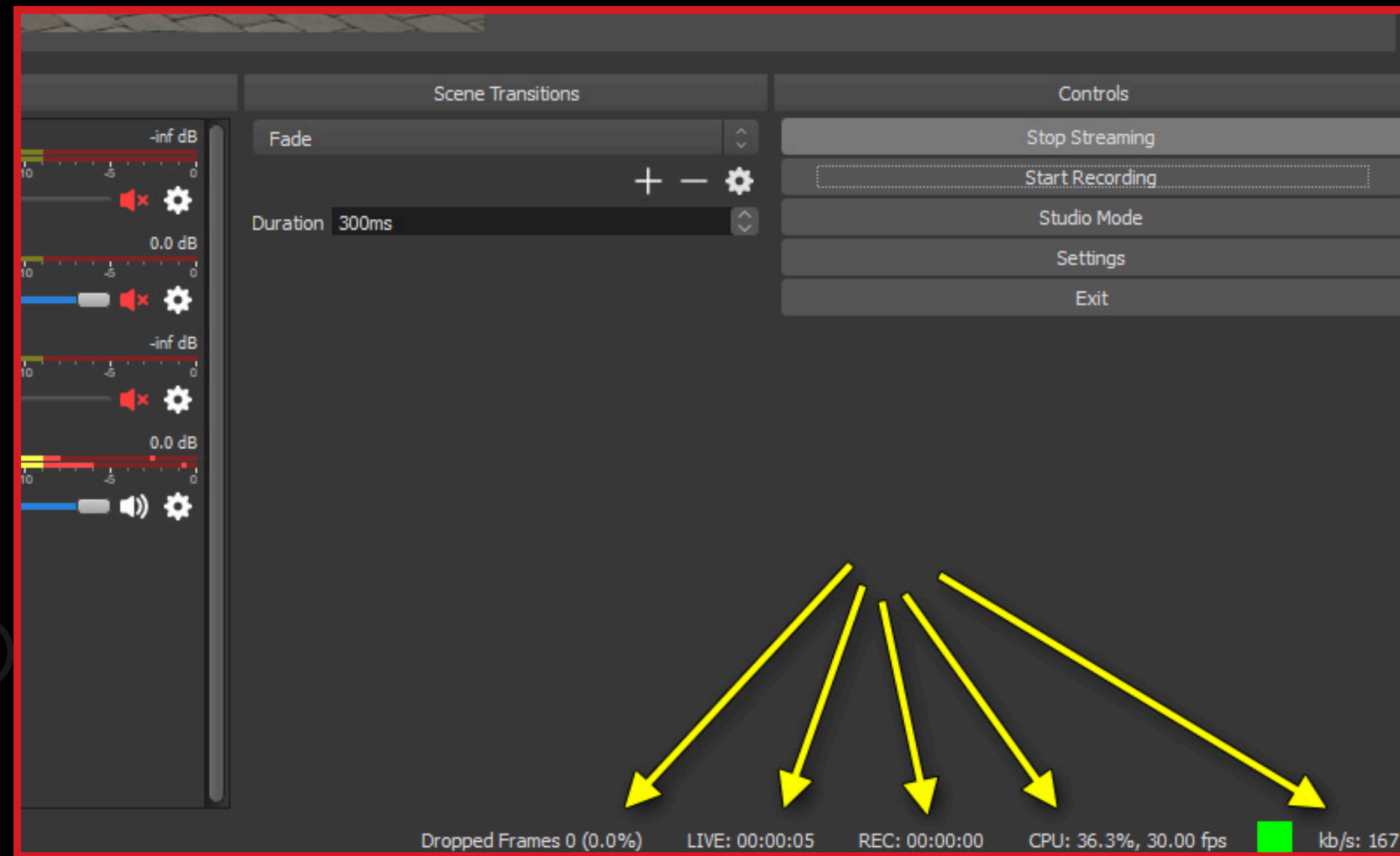


8. Click **Start Streaming** to begin encoding the stream.



OBS Studio – Step-by-Step Configuration

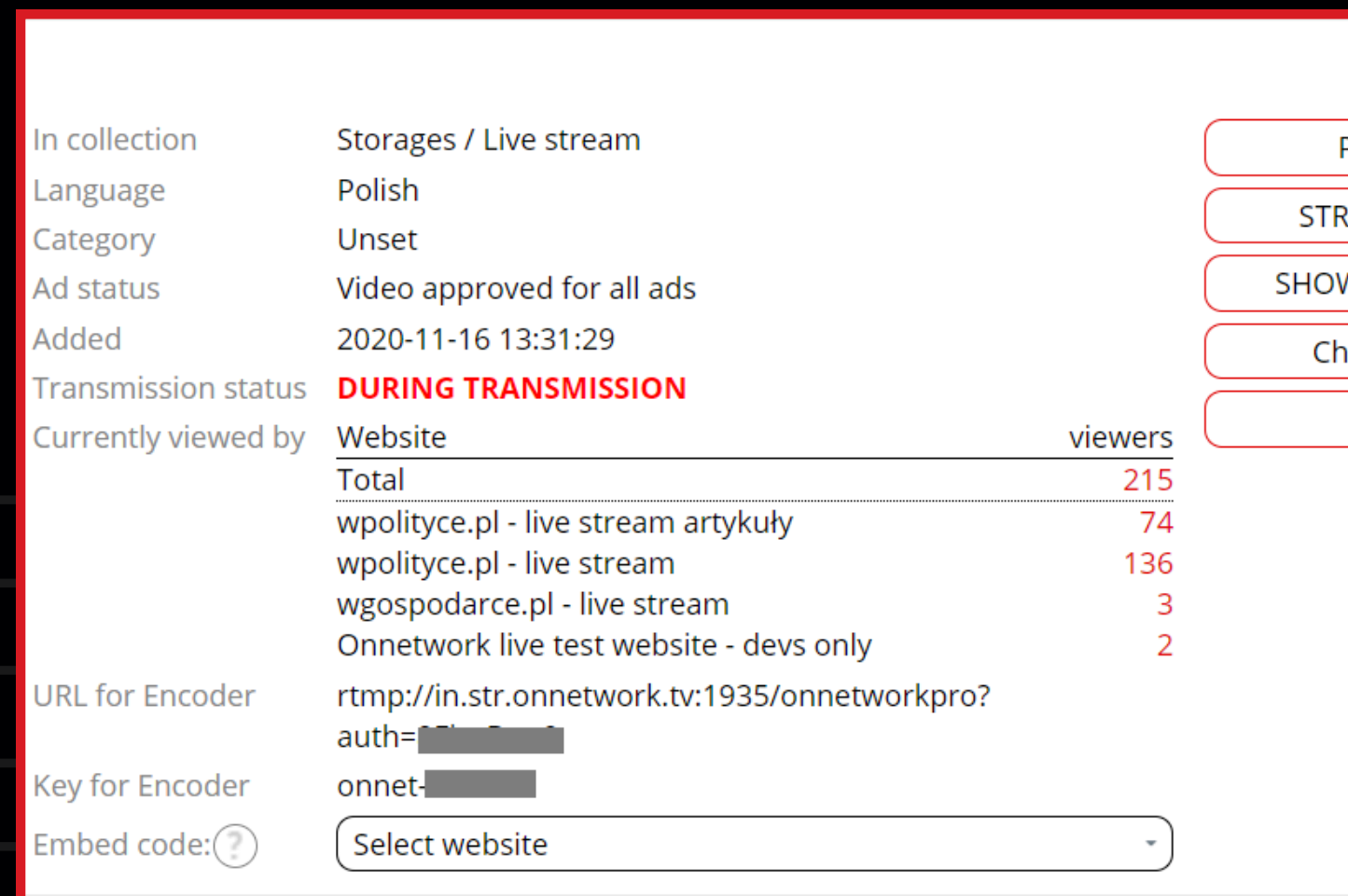
9. Monitor stream parameters on the OBS Studio status bar



Stream Monitoring

During the live stream, the status will display "**LIVE STREAMING IN PROGRESS.**"

The viewer count updates every 5 seconds.



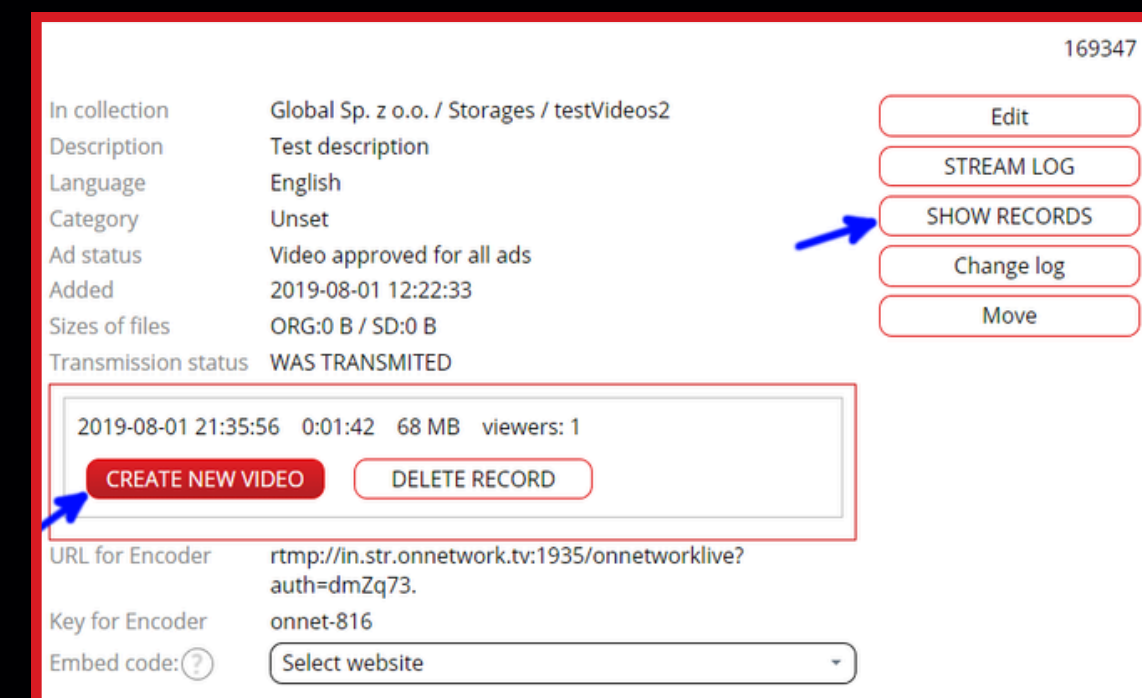
Currently viewed by	Website	viewers
Total		215
	wpolityce.pl - live stream artykuły	74
	wpolityce.pl - live stream	136
	wgospodarcze.pl - live stream	3
	Onnetwork live test website - devs only	2

URL for Encoder: rtmp://in.str.onnetwork.tv:1935/onnetworkpro?auth=██████████

Key for Encoder: onnet-██████████

Embed code: ?

After the stream ends, the content can be saved and edited.



URL for Encoder	Key for Encoder	Embed code: ?
rtmp://in.str.onnetwork.tv:1935/onnetworklive?auth=dmZq73.	onnet-816	Select website

▶ Ad Configuration

Pre-roll Ads

Displayed to the user when the player starts.

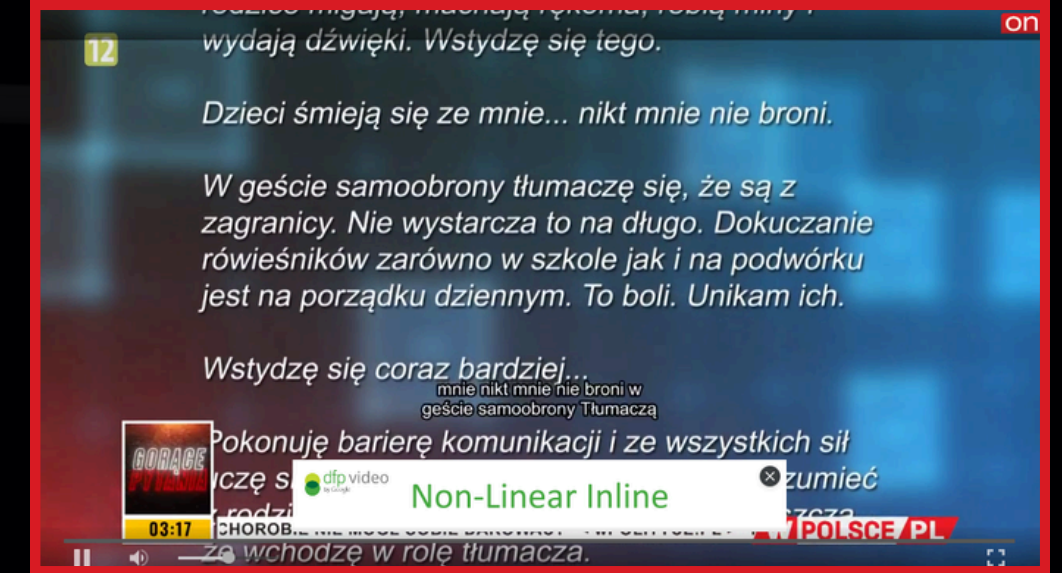
Their configuration is the same as for standard video content.

Overlay Ads

Small banners displayed over the video at specified intervals.

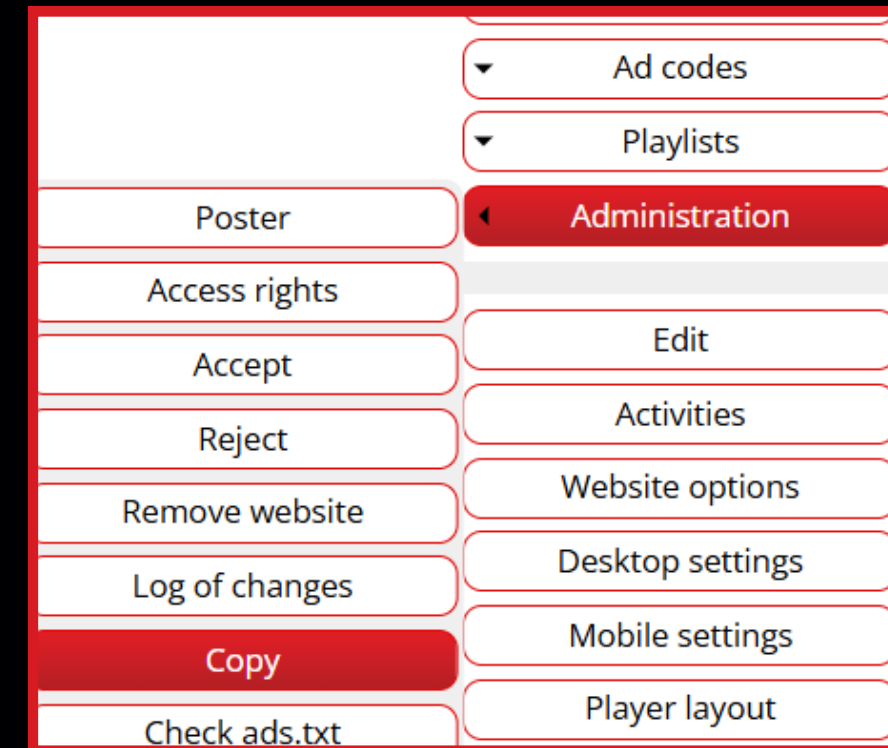
For an overlay ad to display correctly:

- Its height must not exceed 90 px.
- It cannot be taller than 1/3 of the player height



Overlay Configuration

1. A separate website on the platform is required. **Copy** the page where the live stream will take place.
2. Add regular or prebid ad codes for pre-rolls (linear ads only).
3. Enable mid-roll ads in the website settings.

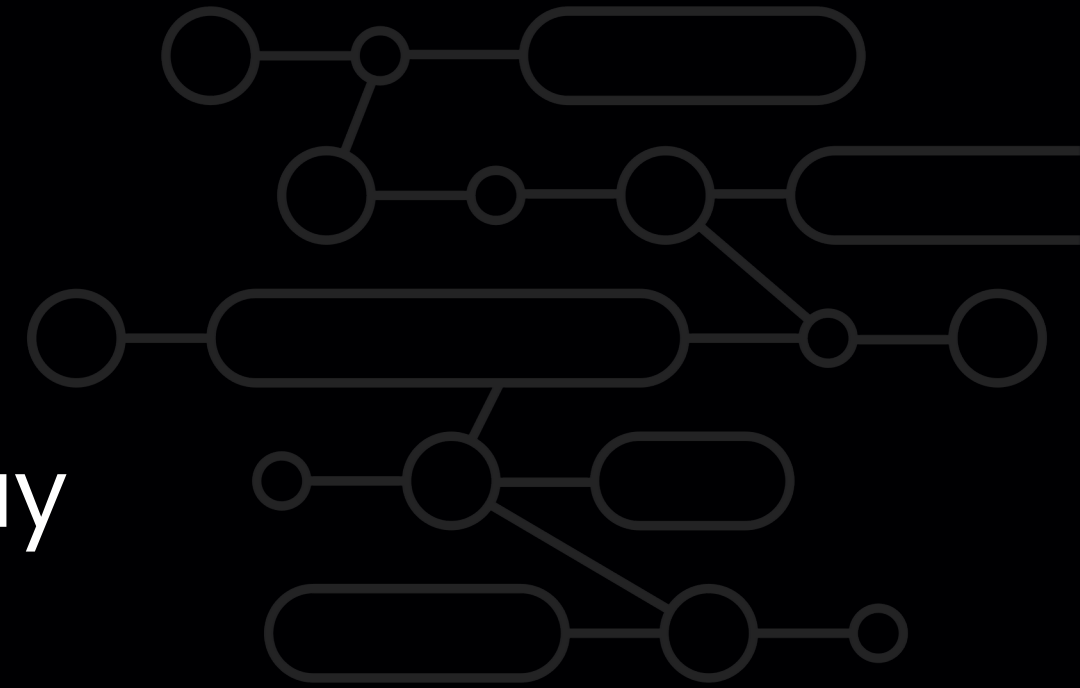


Overlay Configuration

4. Mid-roll ad codes must be configured to display only overlay ads.

Pre-roll	<input type="checkbox"/>
Mid-roll	<input checked="" type="checkbox"/>

5. The ad code must be assigned to the Vast Provider, marked as "**only for non-linear ads**" – contact an administrator if needed.



Overlay Configuration

- Overlay ads are displayed every XX seconds (minimum 60 seconds).

Minimal length of video material for mid-rolls	600
Time space between mid-roll ads	120

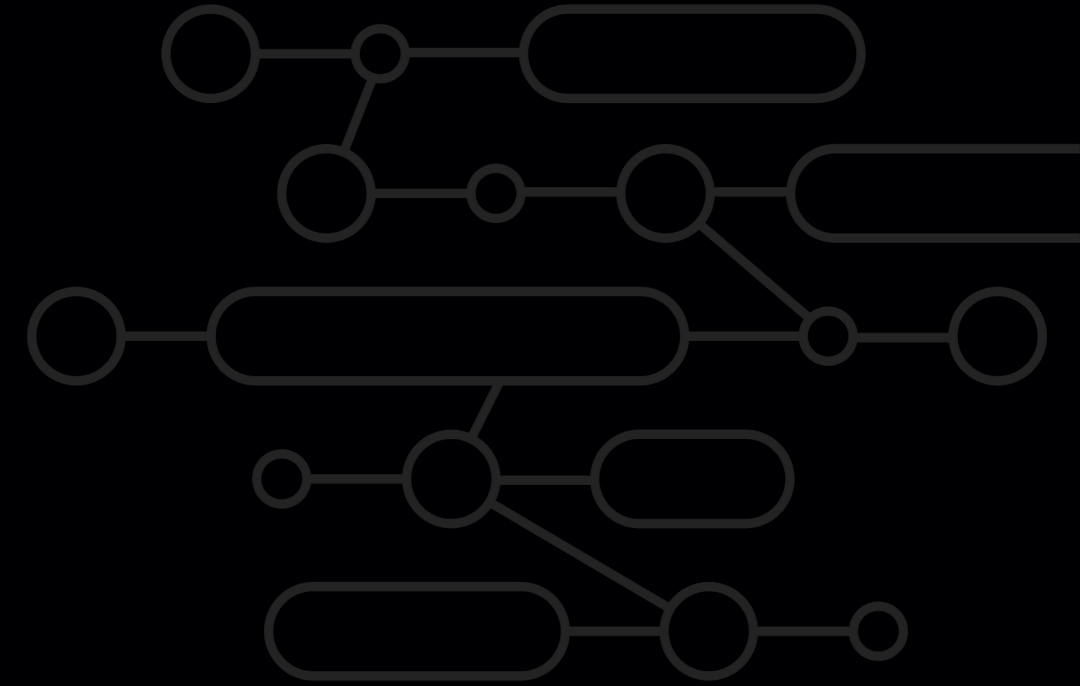
- The first attempt to display an overlay ad occurs after half of the set interval
- The option "**Minimum video length for mid-rolls**" is ignored.



TV Ads: SCTE-35 and HLS

TV Ad Breaks in Live Streams

- Utilize SCTE-35 signals to mark ad breaks in the broadcast.
- Ad timing is based on the stream's internal time, not real-time.
- The current stream time cannot be retrieved outside the encoder, so SCTE-35 support must be implemented within the hardware encoder.





TV Ads: SCTE-35 and HLS

Available Transmission Protocols for SCTE-35

1. **MPEG-TS** (Transport Stream)–
Used in traditional television:
satellite, terrestrial, and cable TV.
 - Popular in TV broadcasting but technically more complex.
 - Uses UDP transmission, which is sensitive to internet quality.
2. **HLS** (HTTP Live Streaming)
 - Widely used for internet streaming.
 - Supported by major cloud providers such as Amazon AWS and Microsoft Azure.
 - Uses EXT-X-CUE signals to mark ad breaks within the video stream.

Protocol selection depends on available hardware and encoders.

**If you have any questions,
write to us!**

`pomoc@onnetwork.pl`